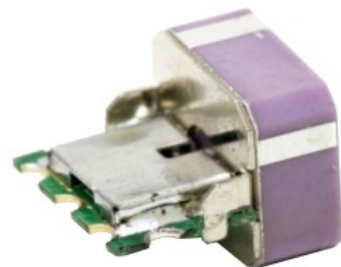

SMT GPS Active Patch Antenna

- **Very small patch 10mm**
- **SMT mount**
- **High performance**
- **15 dB LNA**
- **Super low power consumption**



ADA-10RA-15 is a super compact, SMT easy mount, high performance active GPS antenna module.

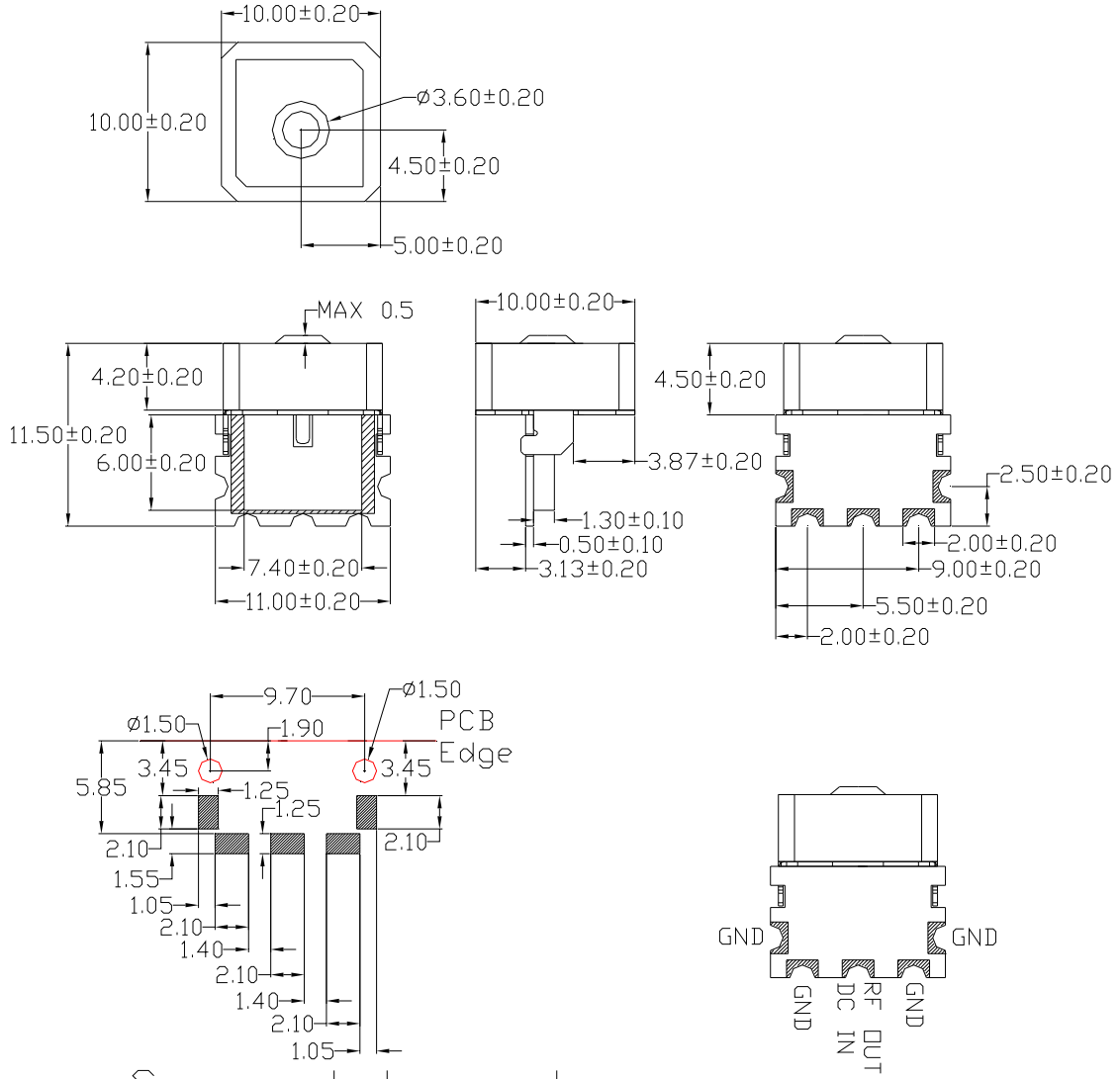
It's unique in it's kind and specially designed for small integrated devices and low cost production creating high yield.

Specification

Category	GPS
Frequency	1575.42 ± 1.023 MHz
Polarization	R.H.C.P.
Antenna Gain	Typ. -3 dBic
Bandwidth	3 MHz min @S11-10 dB.
Antenna Dimensions	10 x 10 x 4 mm
	LNA
Amplifier Gain	Typ 15 dB
Noise figure	Typ 1.4 dB
Output Impedance	50 Ω
VSWR	< 2.0:1
	Electrical Specifications
Supply Voltage	3.0 VDC
Power consumption	3.0 mA (3.0 VDC)
Total Gain	12 ± 4dBic
Impedance	50 Ω
VSWR	< 2.0 : 1
	Overall Performance
GPS part size	10 x 10 x 6.25 mm
Weight	5 ± 0.5 grams
Mounting	SMT
Operating temperature	-40 — +85 ° C

Storage temperature	-40 — +85 ° C
---------------------	---------------

OUTLINE



Suggest Layout

Ordering codes

TYPE	Description	Comment
ADA-10RA-15	SMT GPS Antenna	GPS antenna module

For the latest updates, visit our Web site: www.adactus.se

Disclaimer

Information furnished is believed to be accurate and reliable. However, Adactus assumes no responsibility for the consequences of use of such information nor for any infringement of patents or other rights of third parties which may result from its use.

Adactus reserves the right to make changes without further notice to any product herein to improve reliability, function or design. Adactus does not assume any liability arising out of the application or use of any product described herein.

This publication supersedes and replaces all information previously supplied.

Adactus products are not authorized as critical components in life support devices or systems.