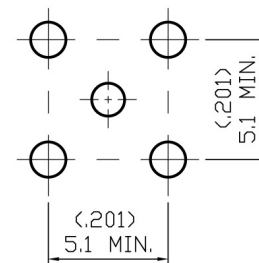
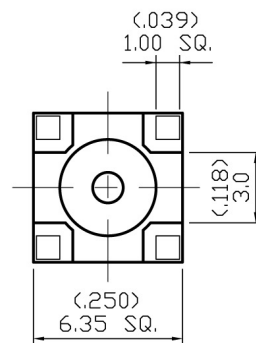
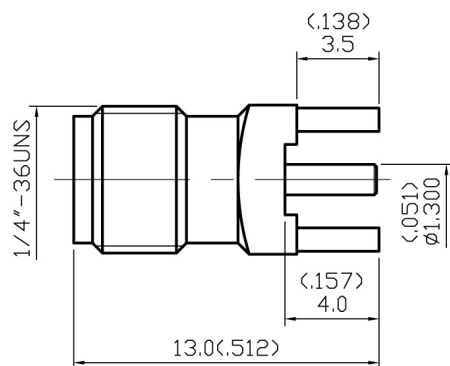


NO	DESCRIPTION	DATE
①	BACKGROUND FORMAT UPDATED	05.09.02'
②	BACKGROUND FORMAT UPDATED	10.13.08'



(4) Ø1.5<.059> MIN.
(1) Ø1.4<.055> MIN.

MOUNTING HOLE

1.0 ELECTRICAL

- 1.1 FREQUENCY RANGE: DC-18 GHz
1.2 NOMINAL IMPEDANCE: 50 OHM
1.3 WORKING VOLTAGE: 500 VOLTS MAX.
1.4 PROOF VOLTAGE: 1000 VOLTS
1.5 VSWR: 1.23 MAX.

2.0 MATERIALS

- 2.1 BODIES: BRASS PER JIS-C3604
2.2 CENTER CONTACT: BERYLLIUM COPPER PER ASTM B196 UNS C17300
2.3 INSULATION: TEFLON PER ASTM D1457 AND ASTM D1710

3.0 FINISHES AND OTHERS

- 3.1 SEE BELOW TABLE FOR DETAILS.

4.0 MECHANICAL

- 4.1 INTERFACE IN ACCORDANCE WITH: MIL-STD-348A


5.0 ENVIRONMENTAL

- 5.1 OPERATING TEMPERATURE RANGE: -65° C TO +165° C

3	CENTER CONTACT	BERYLLIUM COPPER	1	GOLD 50μ" MIN.
2	INSULATION	TEFLON	1	NONE
1	BODY	BRASS	1	GOLD 3μ" MIN.
NO	DESCRIPTION	MATERIAL	Q' TY	FINISH

APPROVED

by _____ DATE: _____

DESCRIPTION			SMA STRAIGHT PCB MOUNT JACK RECEPTACLE							
製圖	DRAWN	TOLERANCE		品名	ADA-19463 T.G.G		日期	DATE	版次	REV.
	Yoko	.X	±0.2	TITLE	\ROHS COMPLIANT (50Ω)		07.07.98'		A-2	
檢圖	CHECK	XX	±0.1	單位	UNIT	DWG.NO.	19-0020			
	Lewis	.XXX	±0.05		mm(in)					
認定	APPROVAL	XXX	±0.05	比例	SCALE					
	Lewis	ANGLE	±5°		4:1					