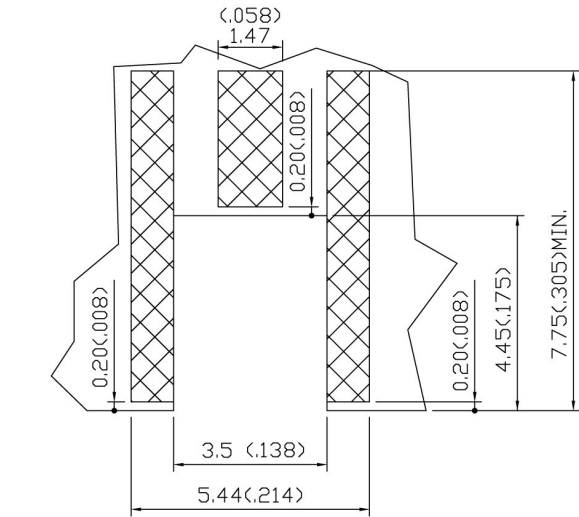
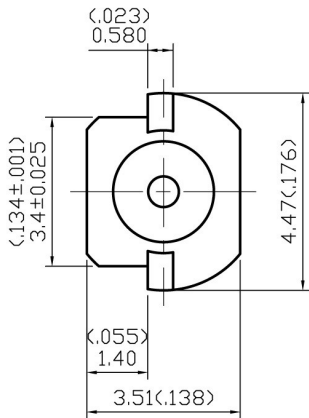
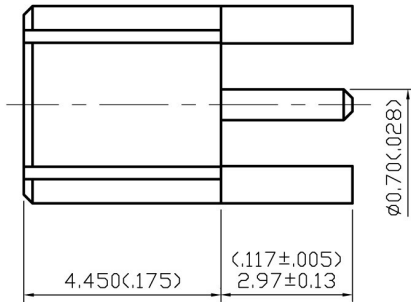
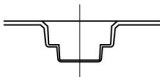
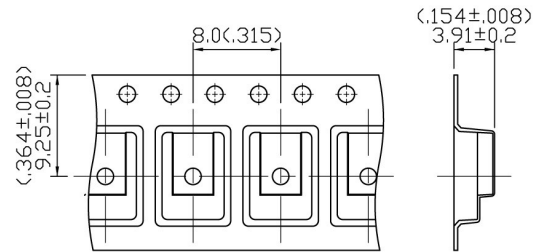


NO	DESCRIPTION	DATE
①	MODIFICATION PART ①	02.24.06'
②	ADD RECOMMENDED LAND PATTERN	03.30.09'



RECOMMENDED
LAND PATTERN



SCALE 2:1

TAPE AND REEL PACKAGING

1.0 ELECTRICAL

- 1.1 FREQUENCY RANGE: DC-6 GHz
- 1.2 NOMINAL IMPEDANCE: 50 OHMS
- 1.3 WORKING VOLTAGE: 250 VOLTS MAX.
- 1.4 PROOF VOLTAGE: 500 VOLTS
- 1.5 VSWR: 1.22 MAX.

2.0 MATERIALS

- 2.1 BODIES: BRASS PER JIS-C3604
- 2.2 CENTER CONTACT: BERYLLIUM COPPER PER ASTM B196 UNS C17300
- 2.3 INSULATION: TEFLON PER ASTM D1457 AND ASTM D1710

3.0 FINISHES AND OTHERS

- 3.1 SEE BELOW TABLE FOR DETAILS.

4.0 MECHANICAL

- 4.1 INTERFACE IN ACCORDANCE WITH: BS EN 122340

5.0 ENVIRONMENTAL

- 5.1 OPERATING TEMPERATURE RANGE: -55° C TO +155° C

3	CENTER CONTACT	BERYLLIUM COPPER	1	GOLD 30 μ" MIN.
2	INSULATION	TEFLON	1	NONE
1	BODY	BRASS	1	GOLD 3 μ" MIN.
NO	DESCRIPTION	MATERIAL	Q'TY	FINISH

APPROVED

by _____ DATE: _____

DESCRIPTION		MMCX STRAIGHT EDGE MOUNT JACK RECEPTACLE					
製圖	DRAWN	TOLERANCE		品名	ADA-37062 T.G.G	日期	DATE
	Yoko	.X	±0.2	TITLE	\ROHS COMPLIANT <50μ>	版次	REV.
檢圖	CHECK	.XX	±0.1	單位	DWG.NO.	37-0010	B-2
	Arc	.XXX	±0.05	mm(in)			
認定	APPROVAL	ANGLE		SCALE			
	Lewis	±5°		比例			