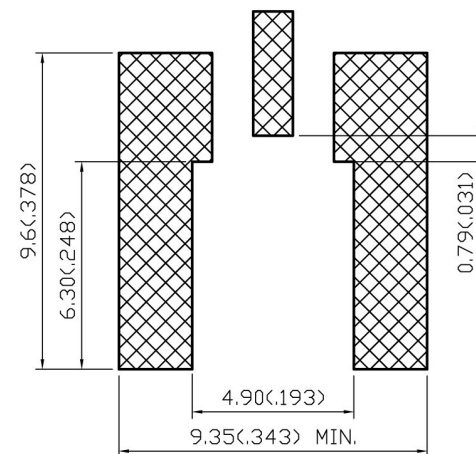
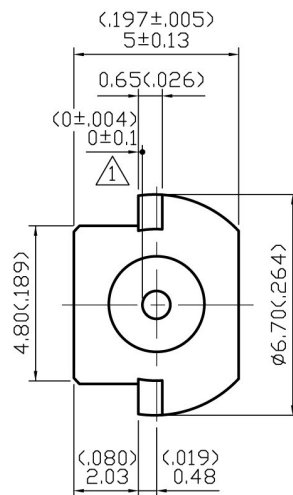
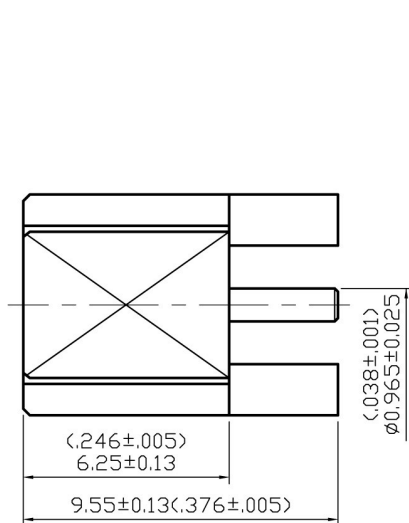


NO	DESCRIPTION	DATE
1	ADD 0±0.1	12.21.07'



SOLDER LAND PATTERN

1.0 ELECTRICAL

- 1.1 FREQUENCY RANGE: DC-6 GHz
- 1.2 NOMINAL IMPEDANCE: 50 OHMS
- 1.3 WORKING VOLTAGE: 335 VOLTS MAX.
- 1.4 PROOF VOLTAGE: 1000 VOLTS
- 1.5 VSWR: 1.22 MAX. AT 2 GHz , 1.35 MAX. AT 6 GHz

2.0 MATERIALS

- 2.1 BODIES: BRASS PER JIS-C3604
- 2.2 CENTER CONTACT: BERYLLIUM COPPER PER ASTM B196 UNS C17300
- 2.3 INSULATION: TEFLON PER ASTM D1457 AND ASTM D1710

3.0 FINISHES AND OTHERS

- 3.1 SEE BELOW TABLE FOR DETAILS.

4.0 MECHANICAL

- 4.1 INTERFACE IN ACCORDANCE WITH: CECC 22220

5.0 ENVIRONMENTAL

- 5.1 OPERATING TEMPERATURE RANGE: -55° C TO +155° C

NO	DESCRIPTION	MATERIAL	Q'TY	FINISH
3	CENTER CONTACT	BERYLLIUM COPPER	1	GOLD 30μ" MIN.
2	INSULATION	TEFLON	1	NONE
1	BODY	BRASS	1	GOLD 3μ" MIN.

APPROVED

by _____ DATE: _____

DESCRIPTION		MCX STRAIGHT EDGE MOUNT JACK RECEPTACLE			
製圖	DRAWN	TOLERANCE	品名	DATE	REV.
Yoko	X	±0.2	ADA-2729 T.G.G	03.28.05'	A-1
檢圖	CHECK	單位	UNIT	DATE	REV.
Jacky	XX	±0.1	mm(in)	03.28.05'	A-1
認圖	APPROVAL	比例	SCALE	DWG.NO.	
Lewis	ANGLE ±5°	6:1		27-0075	

ADACTUS