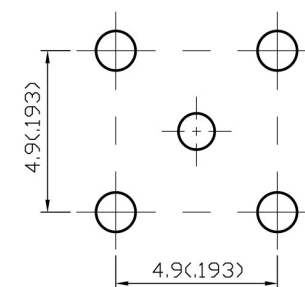
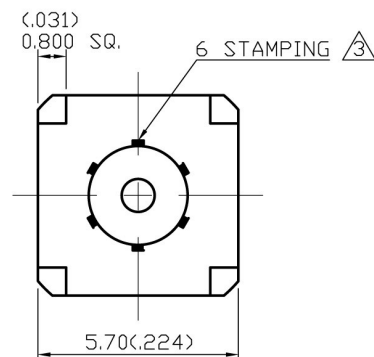
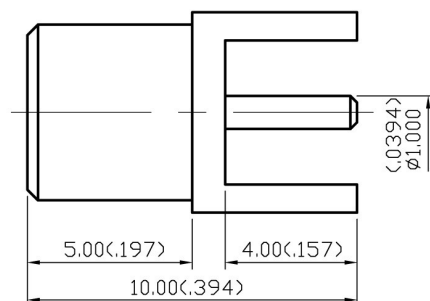


NO	DESCRIPTION	DATE
①	BACKGROUND FORMAT UPDATED Ø1.2 → Ø1.4	07.25.02'
②	BRASS → BERYLLIUM COPPER	07.18.03'
③	DRAWING UPDATED	10.06.03'
④	BACKGROUND FORMAT UPDATED	12.30.08'



① (4) Ø1.4(.055) MIN.
(1) Ø1.1(.043) MIN.

MOUNTING HOLE

1.0 ELECTRICAL

- 1.1 FREQUENCY RANGE: DC-6 GHz
- 1.2 NOMINAL IMPEDANCE: 50 OHM
- 1.3 WORKING VOLTAGE: 335 VOLTS MAX.
- 1.4 PROOF VOLTAGE: 1000 VOLTS
- 1.5 VSWR: 1.22 MAX. @0-1GHz
1.35 MAX. @1-3GHz

2.0 MATERIALS

- 2.1 BODIES: BRASS PER JIS-C3604
- 2.2 CENTER CONTACT: BERYLLIUM COPPER PER ASTM B196 UNS C17300
- 2.3 INSULATION: TEFLON PER ASTM D1457 AND ASTM D1710

3.0 FINISHES AND OTHERS

- 3.1 SEE BELOW TABLE FOR DETAILS.

4.0 MECHANICAL

- 4.1 INTERFACE IN ACCORDANCE WITH: CECC 22220


5.0 ENVIRONMENTAL

- 5.1 OPERATING TEMPERATURE RANGE: -55° C TO +155° C

3	CENTER CONTACT	BERYLLIUM COPPER	1	GOLD 30 μ" MIN.	②
2	INSULATION	TEFLON	1	NONE	
1	BODY	BRASS	1	GOLD 3 μ" MIN.	
NO	DESCRIPTION	MATERIAL	Q'TY	FINISH	

APPROVED

by _____ DATE: _____

DESCRIPTION		MCX STRAIGHT PCB MOUNT JACK RECEPTACLE									
製圖	DRAWN	TOLERANCE		品名	ADA-2705 T.G.G		日期	DATE	版次	REV.	
	Yoko	.X	±0.2	TITLE	\ROHS COMPLIANT (50Ω)		04.16.96'		A-4		
檢圖	CHECK	.XX	±0.1	單位	UNIT	DWG.NO.	27-0005				
	Jacky	.XXX	±0.05		mm(in)						
認定	APPROVAL	.XXX	±0.05	比例	SCALE						
	Lewis	ANGLE	±5°		6:1						

ADACTUS