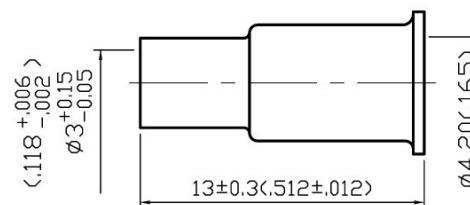
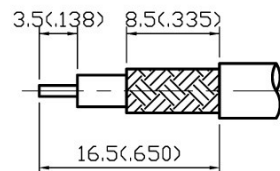


1.1 FREQUENCY RANGE: DC-1.8 GHz
1.2 NOMINAL IMPEDANCE: 50 OHM
2.0 MATERIALS
2.1 BODIES: BRASS PER JIS-C3604
2.2 CENTER CONTACT: BRASS PER JIS-C3604
2.3 CRIMP FERRULE: BRASS PER JIS-C2700



3.1 SEE BELOW TABLE FOR DETAILS.

4.1 FOR USE WITH RG174U OR SIMILAR STYLE CABLE
4.2 CABLE ATTACHMENT: OUTER: CRIMP, INNER: CRIMP/SOLDER
4.3 CABLE RETENTION 15 lbs MIN.
4.4 CRIMP SIZE REQUIRED: CONTACT: SOLDER/1.8(.071) HEX. CRIMP TOOL
FERRULE: 3.9(.154) HEX. CRIMP TOOL
4.6(.181) HEX. CRIMP TOOL

5.1 OPERATING TEMPERATURE RANGE: -40° C TO +60° C

STRIPPING DIMENSION

by DATE:

ADACTUS