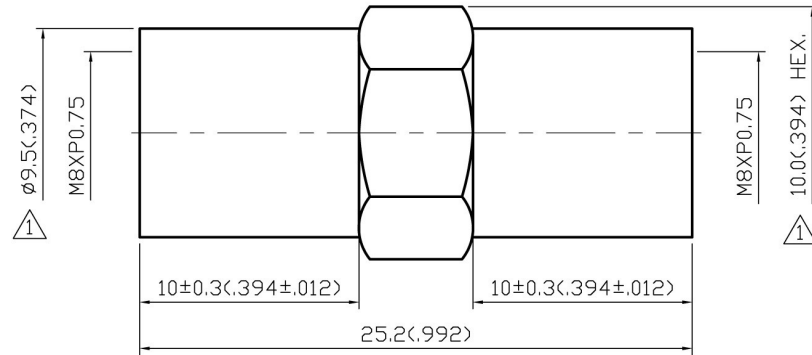


NO	DESCRIPTION	DATE
△	DEL REF. BACKGROUND FORMAT UPDATED	07.20.09'



1.0 ELECTRICAL

- 1.1 FREQUENCY RANGE: DC-900 MHz
1.2 NOMINAL IMPEDANCE: 50 OHM

2.0 MATERIALS

- 2.1 BODIES: BRASS PER JIS-C3604
2.2 CENTER CONTACT: BRASS PER JIS-C3604

3.0 FINISHES AND OTHERS

- 3.1 SEE BELOW TABLE FOR DETAILS.

4.0 ENVIRONMENTAL

- 4.1 OPERATING TEMPERATURE RANGE: -40° C TO +60° C

NO	DESCRIPTION	MATERIAL	Q' TY	FINISH
3	CENTER CONTACT	BRASS	1	GOLD
2	INSULATION	POM	2	NONE
1	BODY	BRASS	1	NICKEL 100μ" MIN.

APPROVED

by _____ DATE: _____

DESCRIPTION		FME PLUG-FME PLUG		品名		23-03-1 D.G.N		DATE	版次	REV.
製圖	DRAWN	TOLERANCE	品名	23-03-1	D.G.N	日期	04.22.93	版次	A-1	
	Yoko	.X ±0.2	TITLE	\ROHS COMPLIANT (50Ω)						
檢圖	CHECK	.XX ±0.1	單位	mm(in)		DWG.NO.	ADA-23031			
	Jacky	.XXX ±0.05	比例	SCALE						
認定	APPROVAL	ANGLE ±5°	比例	4:1						
	Lewis									

ADACTUS