

---

### 4G/LTE Band Adhesive Antenna

---

- 4G/LTE
- On glass mount
- 2~2,5dBiGain

ADA-0068-LTE is an on glass adhesive mount 690-2700MHz dipole antenna with SMA connector, 2.5 m RG174 low loss cable as standard.

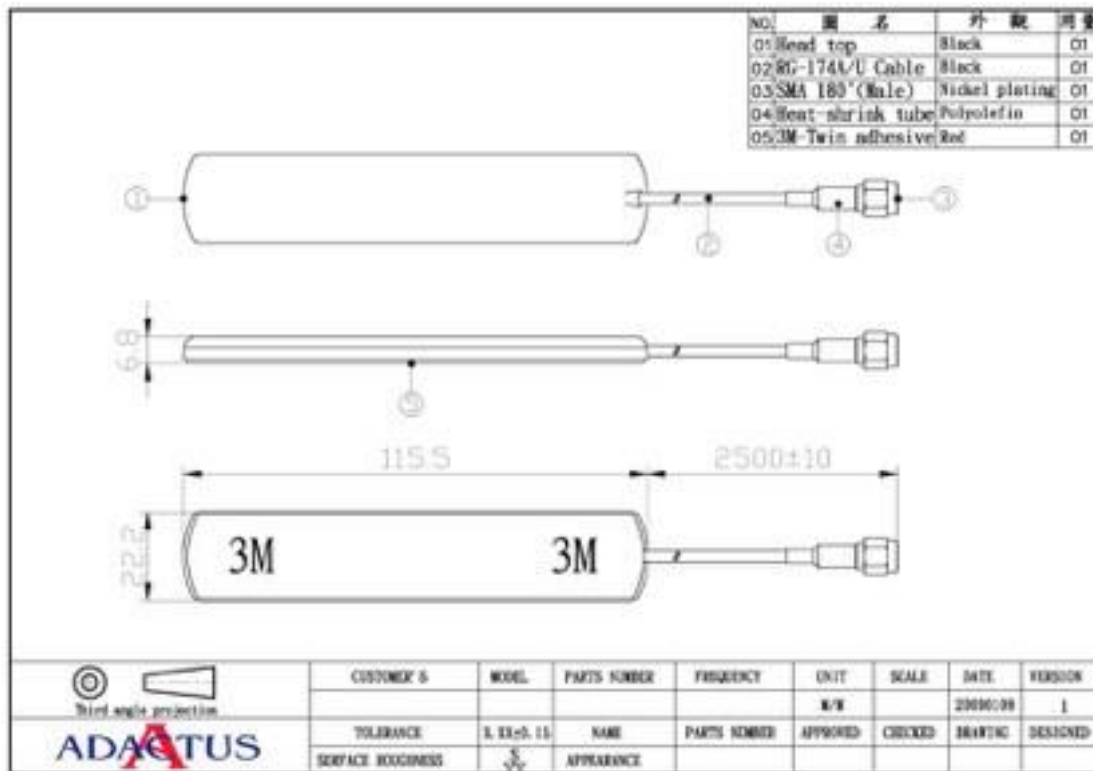


**RoHS**

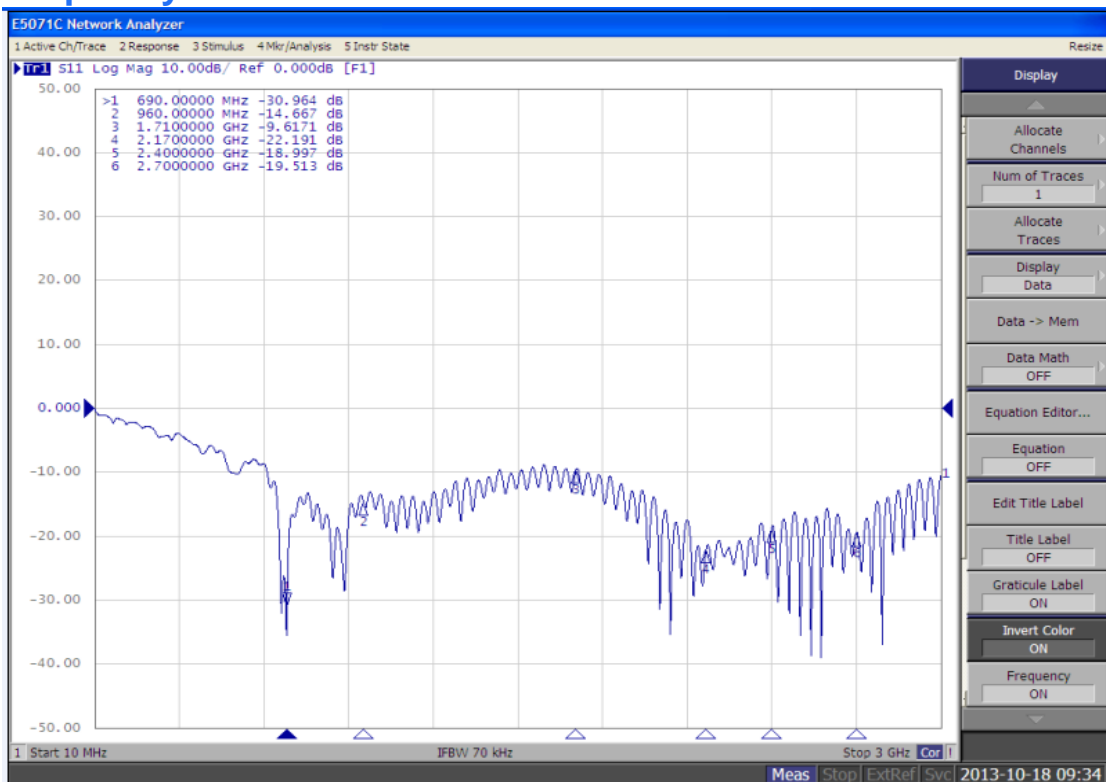
## Specification

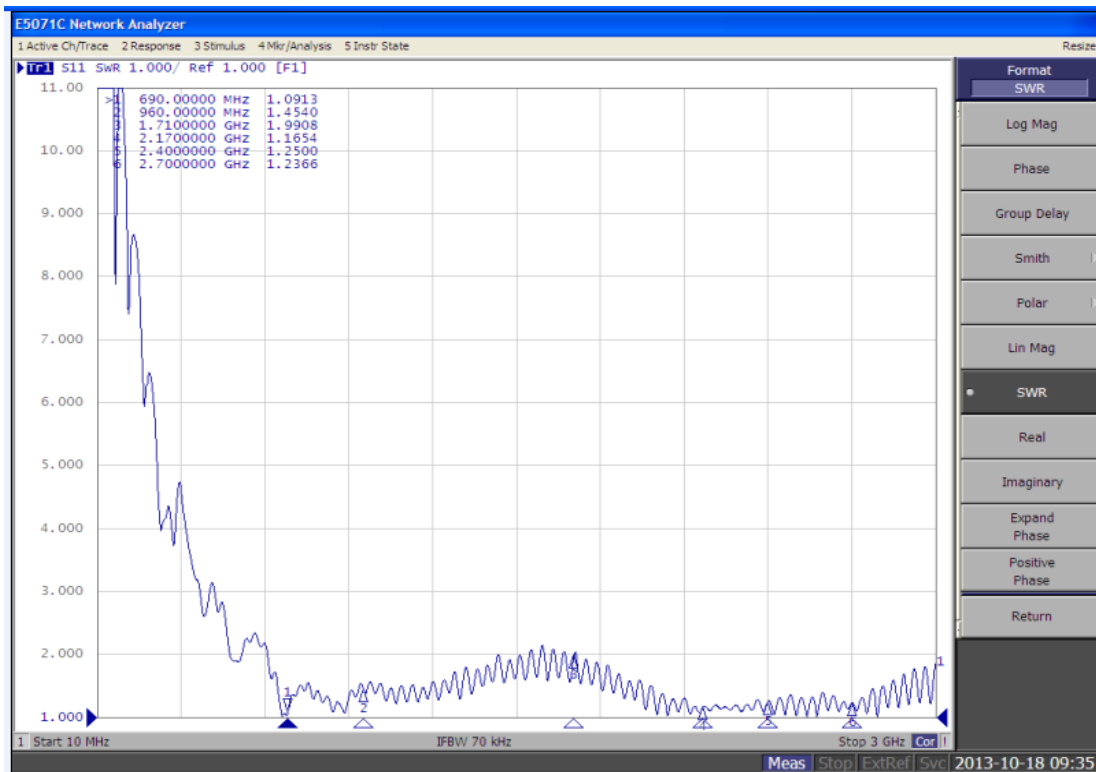
Antenna	Specification
Frequency Bands	690-960/1710-2170/2400-2700MHz
Frequency	690-2700 MHz
Polarization	Vertical
V.S.W.R	<2.0:1
Impedance	50Ω
Gain	2~2,5 dBi
Return Loss	
	Environmental Conditions
Operating Temperature	-40°C ~ + 70°C
Storage Temperature	-40°C ~ + 80°C
Relative Humidity	40% to 95%
	Mechanical Specification
Antenna Material	TPE
Antenna Color	Black
Cable	RG174 low loss, 2.5m
Connector	SMA (M)
Size	115 x 22 x 7mm
Weight	125g Max.
Mounting	Adhesive Tape

## Mechanical Dimension



## Frequency





## Ordering code

TYPE	Description	Comment
ADA-0068LTE	On Glass Antenna	4G/LTE on Glass Antenna

## Disclaimer

Information furnished is believed to be accurate and reliable. However, Adactus assumes no responsibility for the consequences of use of such information nor for any infringement of patents or other rights of third parties which may result from its use. Adactus reserves the right to make changes without further notice to any product herein to improve reliability, function or design. Adactus does not assume any liability arising out of the application or use of any product described herein.

This publication supersedes and replaces all information previously supplied. Adactus products are not authorised as critical components in life support devices or systems.





