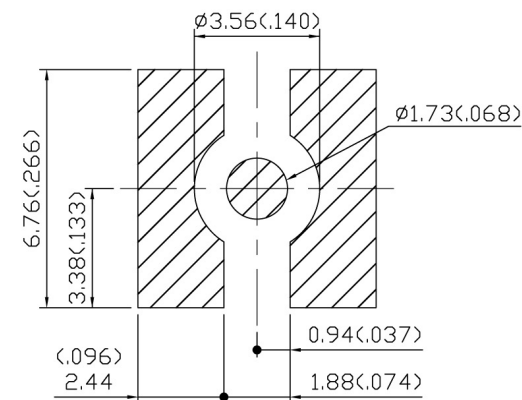
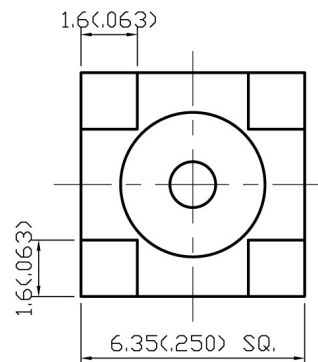
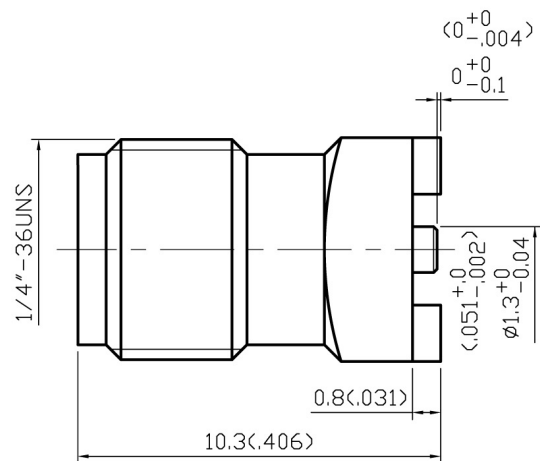


NO	DESCRIPTION	DATE
①	BACKGROUND FORMAT UPDATED ADD RECOMMENDED LAND PATTERN	08.20.08'



① RECOMMENDED
LAND PATTERN

1.0 ELECTRICAL

- 1.1 FREQUENCY RANGE: DC-18 GHz
- 1.2 NOMINAL IMPEDANCE: 50 OHMS
- 1.3 WORKING VOLTAGE: 500 VOLTS MAX.
- 1.4 PROOF VOLTAGE: 1000 VOLTS
- 1.5 VSWR: 1.23 MAX.

2.0 MATERIALS

- 2.1 BODIES: BRASS PER JIS-C3604
- 2.2 CENTER CONTACT: BERYLLIUM COPPER PER ASTM B196 UNS C17300
- 2.3 INSULATION: TEFLON PER ASTM D1457 AND ASTM D1710

3.0 FINISHES AND OTHERS

- 3.1 SEE BELOW TABLE FOR DETAILS.

4.0 MECHANICAL


- 4.1 INTERFACE IN ACCORDANCE WITH: MIL-STD-348A

5.0 ENVIRONMENTAL

- 5.1 OPERATING TEMPERATURE RANGE: -65° C TO +165° C

3	INSULATION	TEFLON	1	NONE
2	CENTER CONTACT	BERYLLIUM COPPER	1	GOLD 50μ" MIN.
1	BODY	BRASS	1	GOLD 3μ" MIN.
NO	DESCRIPTION	MATERIAL	Q' TY	FINISH

APPROVED by _____ DATE: _____

DESCRIPTION			SMA STRAIGHT SURFACE MOUNT JACK RECEPTACLE									
製圖	DRAWN	TOLERANCE		品名		ADA-19462 T.G.G			日期	DATE	版次	REV.
	Yoko	X	±0.2	TITLE		\ROHS COMPLIANT <50Ω			07.25.02		A-1	
檢圖	CHECK	XX	±0.1	單位	UNIT	DWG.NO. 19-0096						
	Lewis	XXX	±0.05		mm(in)							
認定	APPROVAL	XXX	±0.05	比例	SCALE							
	Lewis	ANGLE	±5°		6:1							

ADATUS